

*Transforming the health of
the communities we serve,
one person at a time.*

2024 COMMUNITY IMPACT REPORT

Contents

A Word from Our President	3
Meet our Executive Leadership Team	3
Board of Directors	4
Redefining Healthcare Excellence	4
PSHP in Focus	5
Peach State Health Plan in the Community	7
Strengthening Provider Partnerships	10
Value-Added Benefits	11
Community Stories of Support	14
Ambetter from Peach State Health Plan in the Community	16
Addressing Root Causes	18
Enhancing the Healthcare Experience	20
Connecting Rural Communities	22
Spotlight on Collaborations	25
Making a Difference: Volunteerism Beyond the Workplace	26
Thank You!	27



President's Welcome



We are proud to share our 2024 Community Impact Report, which highlights the incredible progress made possible by the dedication of our team, the support of our partners, and the trust of the communities we serve.

This year, we deepened our commitment to improving health outcomes across Georgia through strategic investments, innovative programs, and meaningful partnerships. Together, we expanded access to quality care, supported local organizations addressing critical health disparities, and empowered individuals and families to lead healthier lives.

Among our key achievements, we:

- Awarded grants to Federally Qualified Health Centers to strengthen school-based health services for children and families.
- Partnered with providers to launch new initiatives addressing mental health and chronic conditions.
- Organized dozens of community events offering free wellness screenings, health education, and resources to thousands of Georgians.

These milestones are a testament to what we can achieve together when we prioritize health and well-being for all. Yet, we recognize there is still more to do. As we look ahead, we remain steadfast in our mission to serve our members with excellence, partner with our communities to address health challenges, and advocate for a healthier Georgia.

Thank you for being an essential part of this journey. Your trust and partnership inspire us to make a greater impact each day.

Clyde A. White

President, Peach State Health Plan

Executive Leadership Team



Laquanda Brooks

Senior Vice President,
Population Health & Clinical Operations



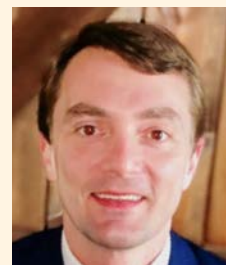
Rayshawn S. Clay

Chief Operating Officer



James A. Richardson, MD

Chief Medical Director



Jason Skipper

Vice President,
Government Relations & Business Development



Robert J. Friedrichs

Plan Chief Financial Officer



Annette L. Zerbe

Vice President, Compliance

Board of Directors

Wade Rakes

Chairman
Chief Growth Officer,
Centene Corporation

Joel Samson

Board Member; Regional General
Counsel, Centene Corporation

David M. Williams, MD

Board Member; President & Chief
Executive Officer, Southside
Medical Center

Duane A. Kavka

Board Member; Executive
Director, Georgia Association
for Primary Health Care, Inc.
(GAPHC)

Michael W. Brooks, MD

Board Member; President and
Chief Executive Officer, Family
Health Centers of Georgia

Gwelda Swilley

Board Member; Senior
Consultant, AndCo Consulting

Roland “Champ” Bailey

Board Member; Pro Football Hall
of Famer, NFL; Chief Diversity
Officer

Terry England

Board Member; Chief of
Staff, Georgia House of
Representatives

Redefining Healthcare Excellence *Peach State Health Plan (PSHP) Products*



Medicaid

Medicaid is a program for low-income families and individuals. Peach State Health Plan offers this program through Georgia Families®. Georgia Families® delivers health care services to Medicaid and PeachCare for Kids® members. The program is a partnership between the Georgia Department of Community Health (DCH) and private care management organizations (CMOs).



Ambetter from Peach State Health Plan

Ambetter from Peach State Health Plan is a Health Insurance Marketplace product. The Health Insurance Marketplace (HIM) provides a way for the uninsured to find health plan options. Peach State Health Plan provides coverage options for the HIM through Ambetter from Peach State Health Plan.



Wellcare

Wellcare offers a range of Medicare products, including Medicare Advantage and Medicare Prescription Drug Plans (PDP), which provide affordable coverage beyond Original Medicare.



At a Glance *PSHP in Focus*

2006
First Year of Operation

405
Full-time Employees



54K+
Number of Providers

CENTENE®
Corporation

2024 Awards and Recognitions

- Centene, Peach State's Health Plan parent company, was recognized for the third consecutive year in Fortune's "Best Workplaces in Health Care™ 2024"
- Centene Corporation named one of top 50 companies for diversity by Fair360 for the fifth consecutive year

2024 Contributions Snapshot

By the Numbers



Charitable Contributions
\$2,829,577



College Scholarships:
\$100,000



Dorm Room Supplies:
\$14,700



Member Assistance Touches
(Grievances and Appeals):
3,000



Back to School Kits:
4,000



Essentials for New Moms:
8,000



Meals Delivered:
51,971



Employee Volunteer Service hours:
254



Disaster Relief Kits:
1,000



Disaster Relief:
\$100,000



Embracing Differences

The Peach State Health Plan Business Unit Council continues to foster a culture of awareness and belonging through impactful educational initiatives. The monthly Collective Pulse delivers resources to employees, highlighting diverse cultures, histories, and perspectives. In November 2024, the council hosted a special program for Native American Heritage Month, celebrating the rich traditions and contributions of Native American communities while promoting dialogue and understanding.

Celebrating Diversity: cPRIDE Atlanta at the Atlanta Pride Parade

The cPRIDE Atlanta chapter proudly participated in the 2024 Atlanta Pride Parade, celebrating diversity, inclusion, and unity within our vibrant community. Team members joined thousands of participants in a colorful and joyful display of solidarity and support for the LGBTQIA+ community.

This event highlighted our ongoing commitment to fostering equality and creating an inclusive environment where everyone feels valued and respected.

Peach State Health Plan in the Community

Peach State Health Plan continued its mission to support and empower Georgians on their individual health journeys through a dynamic blend of community events, provider-focused initiatives, health and resource fairs, strategic partnerships, and employee volunteerism. Our unwavering commitment spans all six geographic regions designated by the Department of Community Health (DCH) across Georgia, where we organized, sponsored, and actively participated in a variety of events. These engagements included provider stakeholder events, virtual gatherings, indoor and outdoor activities, as well as convenient drive-through setups. Through these efforts, we reinforced our dedication to fostering community and provider well-being in accessible and innovative ways.

Community
Events

1,035

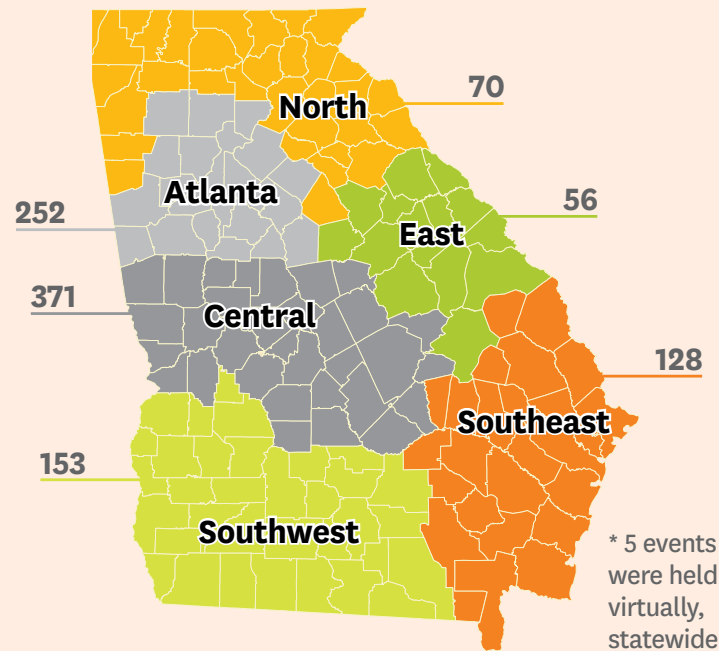
Event
Attendance

190,410

Member
Impact

30,218

2024 Events by Region*



Explore more events that Peach State Health Plan hosts for our members and the community.

Peach State Health Plan in the Community



Back to School Bash & Resource Fairs

Our Community Relations team made a significant impact across the state by attending 40 Back to School events, establishing outreach in every region. The highlight of the year was Peach State Health Plan's Back to School Bash & Resource Fair, held at Albany State University's West Campus Arena. This event drew over 1,000 attendees, with nearly 200 Peach State Health Plan members present.

The event was supported by various stakeholders and community partners, ensuring a well-rounded experience for all. Peach State Health Plan Ambassador, Harry Douglas, was on-site, assisting with the event and distributing school supplies to students. Our Quality Improvement team partnered closely with the Phoebe Putney Health System, one of our network providers that covers a 41-county area in

the southwest region, to deploy their mobile unit. This made it easier to schedule members so they could access care and close important gaps. Sharecare by Peach State Health Plan was also available to assist members with downloads and guidance on navigating the new app.

In total, this event welcomed nearly 40 community partners who provided valuable resources, shared helpful information, and donated extra school supplies—creating a fun and engaging experience for everyone involved. This Back to School Bash & Resource Fair was not only the largest but also the most attended event of the year, reflecting the strong community support and engagement that Peach State Health Plan is committed to fostering for its members and their families.

Peach State Health Plan in the Community

Peach State Healthy Days in the Community

Peach State Healthy Days in the Community is a collaborative initiative led by the Member Retention, Quality Improvement, and Community Relations teams to bring essential healthcare services directly to local communities. These events allow members to close care gaps without disrupting their daily routines, ensuring families can focus on their priorities while accessing wellness exams, sports physicals, flu immunizations, COVID screenings, and other critical health services.

At the heart of this event is a seamless collaboration across Peach State Health Plan teams, designed to meet families where they are and connect them with care. By working with trusted local organizations, our Member Retention team helps to extend the event's impact into the broader community, ensuring a welcoming environment for all attendees—not just our members.

Mobile healthcare partners, secured through our Quality Improvement team, help bring trusted

providers directly to the community making care convenient, comfortable and close to home. Meanwhile, our Community Relations team makes it all come together, leveraging partnerships with local YMCA's, rec centers, and neighborhood hubs to ensure accessibility. They also bring in wraparound support by coordinating with organizations offering food, clothing, and nutritional services—creating a one-stop experience that addresses both health and everyday needs.

Peach State Healthy Days supports the following key goals:

- Improving member health outcomes
- Meeting HEDIS measures
- Providing Value-Added Benefits
- Strengthening community ties

By making healthcare and resources accessible, Peach State Health Plan reaffirms its commitment to building a healthier Georgia through teamwork, education, and care delivered where it's needed most.



Strengthening Provider Partnerships



We remain dedicated to enhancing our partnerships with healthcare providers, physicians, and office staff across Georgia by continually improving the services and support we provide.

Peach State Health Plan actively participated in 19 stakeholder events across Georgia collaborating with partners such as GA AAP (American Academy of Pediatrics), Immunize Georgia, Hometown Health, GA FP — GA Academy of Family Physicians, and GA OB/GYN (Obstetrical & Gynecological) Society. These events provided opportunities to engage with providers outside their offices. At our vendor and claims tables, we addressed provider concerns directly, offering on-the-spot assistance and resolution for claims-related questions.

To ease administrative burdens for providers, Peach State Health Plan implemented **Availity Essentials** as the new portal of choice, enabling providers to consolidate processes, streamline workflows, and eliminate the need for an additional web portal. Additionally, the introduction of monthly Qualtrics surveys allowed the Provider Relations team to gather actionable feedback and proactively address issues before they escalated. To further enhance these efforts, corporate leadership conducted in-depth provider interviews to gain a deeper understanding of healthcare provider challenges, identify blockers, and prioritize focus areas for improvement.

In addition, our corporate team launched the **Voice of the Provider** program to strengthen our connection with providers. Some features of this initiative went live in 2024, with additional enhancements scheduled for early 2025.

By fostering open communication and providing enhanced support, Peach State Health Plan continues to prioritize the needs of providers, ensuring their voices shape our services and solutions.

Value-Added Benefits

To improve the member experience, we offer Value-Added Benefits (VABs), extra services designed to go beyond standard coverage, support well-being, and encourage healthier outcomes. Below are some member-favorite VABs from the year.

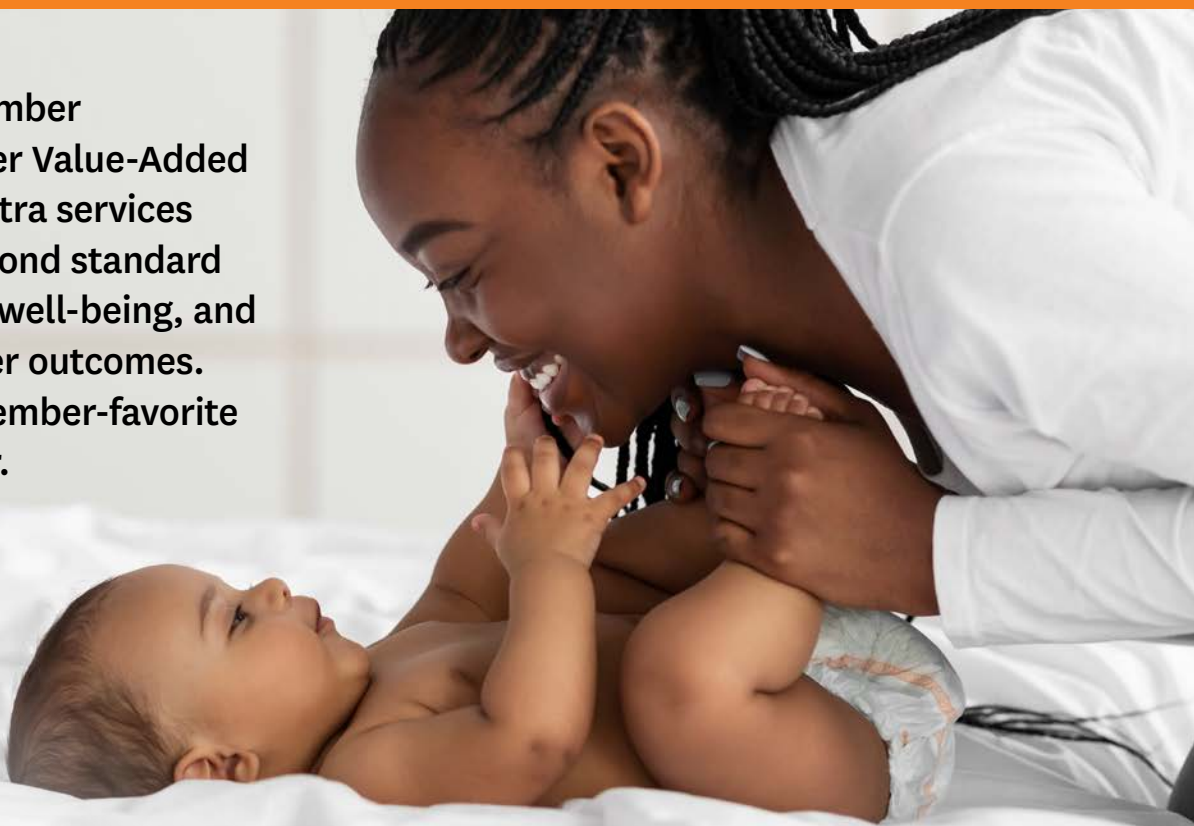
Healthy Mommy & Babies Program

Our Healthy Mommy & Babies Program focuses on providing comprehensive prenatal care, promoting healthy deliveries, encouraging breastfeeding, and ensuring new moms complete all of their postpartum visits.

We supported new mothers in the following ways:

- Distributed over 6,000 electric breast pumps.
- Provided access to our Mommy Store for over 2,000 new moms. The store included essential items such as car seats, strollers, diapers, pack 'n plays, and baby activity centers for those who completed their prenatal and postpartum visits.

These efforts highlight our commitment to supporting maternal and infant health within our community.



Healthy Families Program

The **Mom's Meals** program provides home-delivered, condition-specific meals and nutritional education to members enrolled in prenatal, chronic condition, behavioral health, post-discharge programs, or those qualifying based on Social Determinants of Health. Members receive two meals per day for four weeks, delivered within five business days of referral.

We supported over 50,000 members through our home-delivered meals program, promoting better health outcomes and addressing critical nutritional needs.

The Over the Counter (OTC) items were a member favorite in 2024, serving over 85,000 households by providing essential health items, delivered to their homes or available for pick-up at participating CVS stores.

Wellness Wins

Over 250,000 members were rewarded through the My Health Pays® rewards program for participating in and completing wellness activities, promoting healthier lifestyles and better health outcomes.

Value-Added Benefits



Learn more
about Peach
State Health Plan
Value Added
Benefits (VABs)

Steps to Success

We embrace the power of education as a cornerstone of our mission. Through our Steps to Success program, we distributed over 75 GED digital packets to qualified members, supporting their pursuit of educational achievement. Additionally, we awarded 49 college freshmen Dorm Room Scholarships, providing \$300 Amazon gift cards—totaling \$14,700—to help them prepare for a successful start to college life.

Value-Added Benefits

Post-Secondary Education and Training Scholarships

Each year, eligible Peach State Health Plan members have the opportunity to apply for a \$10,000 scholarship to support their pursuit of higher education or vocational training after high school. Applicants were asked to submit a 500-word essay envisioning a superpower they would choose and how they would use it to create positive change in their community.

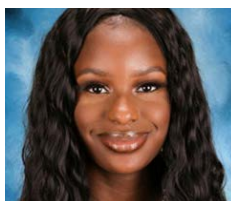
A panel of esteemed education leaders from across the state reviewed the submissions, ultimately selecting ten outstanding essays. The following students were awarded scholarships for 2024:



Ariel B-S,
Kennesaw State
University



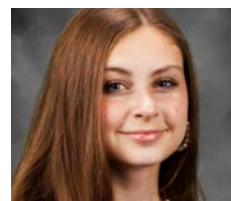
Issac B.,
Tennessee State
University



Hope B.,
Albany State
University



Johanna D.,
Jacksonville State
University



Noelle H.,
University of North
Georgia



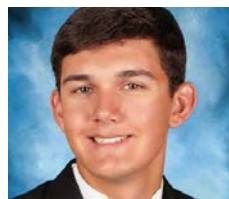
Erin K.,
University of South
Carolina



Jaiver M.,
Savannah College
of Art and Design



Sean M.,
Georgia State
University



Dillion S.,
Georgia Institute of
Technology



Sunday Y.,
North Carolina
Agricultural and
Technical College



Member Spotlight

Post-Secondary Education and Training Scholarship Recipient: *Dillion S.*

Dillion S. is one of the ten recipients of the \$10,000 Educational Scholarship awarded by Peach State Health Plan. Dillion expressed deep gratitude for being selected for the Post-Secondary Education and Training Scholarship, recognizing the significant impact it has had on both personal and academic growth.

"This scholarship has provided crucial financial support, significantly easing the financial burden on me and my family, and allowing me to focus more on the demands of academic life."

As a mechanical engineering major at one of the top engineering colleges in the nation, Dillion believes this support brings him one step closer to achieving the goal of improving the human condition.

"Thanks to this scholarship, I can dedicate more time and energy to excelling in my studies and preparing for a successful future. Thank you for your commitment to supporting students like me. Your generosity has truly made a difference, and I am so appreciative of the opportunity this scholarship provides."

Community Stories of Support

Commissioner Marvin Arrington Jr.'s Annual Blanket with Love Event

Peach State Health Plan proudly participated in Fulton County Commissioner Marvin Arrington Jr.'s annual Blanket with Love event, a vital initiative supporting individuals in need. New and gently used blankets, coats, clothing, shoes, toiletries, and catered meals from Big Daddy's Café were provided to those in the community.

Notable attendees included Fulton County Manager Dick Anderson, directors from Angie's List and the Gateway Center for Homeless Services, along with the Fulton County Behavioral Health Bus, which offered on-site resources and support.

In collaboration with Wellcare, Peach State Health Plan contributed bags filled with toiletries, hats, gloves, and blankets, affirming our commitment to supporting vulnerable populations and fostering stronger, healthier communities.

Community Health Empowering Members Through Outreach


The Community Health Worker Team partnered with local organizations to provide preventative services and resources to over 1,600 members and non-members through Mammography Events, Healthy Lifestyle Workshops, and Community Baby Showers. These events, hosted at local health departments and breast health centers, focused on improving overall health and addressing critical needs within the community.

Mammography Events: Designed to support non-compliant members, these events provided breast exams and education on the importance of regular screenings in the prevention and early detection of breast cancer.

Healthy Lifestyle Workshops: Focused on empowering members with tools and knowledge to improve their health through interactive education and hands-on activities.

Community Baby Showers: Educated expectant mothers on the importance of attending prenatal and postpartum appointments. The outreach targeted high-risk pregnant women, connecting them to the High-Risk Case Management program to reduce the maternal and infant mortality rates and to improve birth outcomes in the State of Georgia.





"My kids have been able to receive great care, thanks to Peach State Health Plan."

- I. Hawkins

"My family has been part of Peach State Health Plan for many years, and we love the plan and its benefits."

- P. Donaldson

"Love, the Spending Card Options and the Over-the-counter (OTC) benefits available on the APP!"

C. Almon

Ambetter from Peach State Health Plan in the Community



FROM



Georgia Access Kick-Off: A New Era for Health Insurance Enrollment

As part of our continued commitment to helping individuals access health insurance, representatives from Ambetter from Peach State Health Plan attended the Georgia Access Kick-Off event at Liberty Plaza. The event brought together a diverse group of insurers and organizations, including the Georgia Primary Care Association (GPCA), which supports individuals seeking health coverage.

The event was organized by the Georgia Department of Insurance, led by Commissioner John F. King. Attendees were welcomed and entertained by performances from the Westlake High School Marching Band and a Mariachi Band, adding vibrancy to the occasion.



This event marked a significant milestone, as it was the first day Georgia residents transitioned from using Healthcare.gov to the new Georgia Access portal.

Empowering Small Businesses: Ambetter Health at Atlanta's Small Business Expo



The Small Business Expo (SBE), held in Atlanta, is dedicated to promoting small business growth and development. This event provides unparalleled networking opportunities and expert-led workshops designed to empower small business owners.

Representatives from Ambetter from Peach State Health Plan attended the expo in December to offer support and provide valuable educational materials on health benefits specifically designed for small business owners.

Jenessa McKinney, representing Ambetter Health, delivered an insightful presentation on ICHRA (Individual Coverage Health Reimbursement Arrangement), a revolutionary approach to health benefits, that highlighted its potential to transform how businesses provide healthcare coverage

Ambetter Health and Speedway Motorsports: Driving Health Forward at the NASCAR Cup Series

As part of Centene's ongoing partnership with Speedway Motorsports, Ambetter Health proudly serves as the entitlement partner for the NASCAR Cup Series race at Atlanta Motor Speedway. This collaboration continues to be an exciting opportunity to engage with NASCAR fans while promoting our mission to transform the health of communities and ensure access to high-quality, affordable healthcare for all.

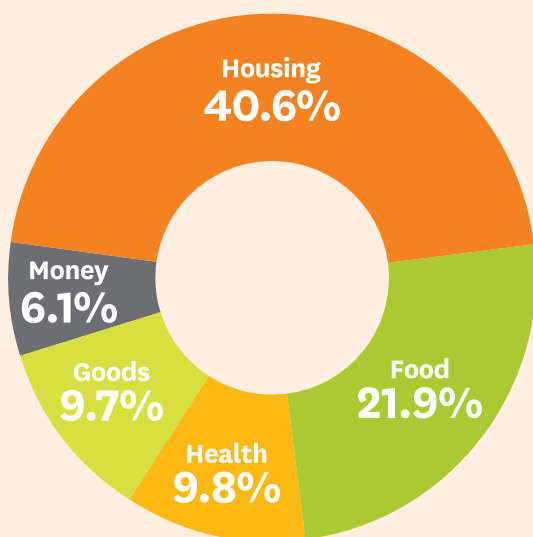


Addressing Root Causes

Social Drivers of Health (SDOH)

At Peach State Health Plan, we actively engage with our members, offering various resources and support, including opportunities for continuing education, job readiness and volunteering. This ensures that members can fulfill the eligibility requirements of qualifying activity hours through referrals to community-based organizations. We are delighted to contribute to the well-being of our community through the success of the Pathways program.

Top 5 Findhelp Search Categories



Top 5 Referral Organizations

- Salvation Army – Georgia Division
- Society of St. Vincent de Paul Georgia
- Warehouse of Hope
- Partnership for Community Action Inc.
- Vital Options International (VOI)

Top 10 Counties

- | | | |
|----------|------------|-----------|
| ■ Fulton | ■ Gwinnett | ■ Bibb |
| ■ Dekalb | ■ Muscogee | ■ Chatham |
| ■ Cobb | ■ Henry | ■ Douglas |
| | ■ Newton | |

Georgia Pathways to Coverage: Empowering Georgians Through Dedicated Events and Career Support



The Georgia Pathways to Coverage™ program continues to help low-income Georgians qualify for Medicaid who would otherwise not be eligible for traditional Medicaid. A total of 38 events were dedicated specifically to the Georgia Pathways program. These events included several Goodwill Job & Career Fairs, initiatives led by local state elected officials, and collaborations with other community agencies focused on job and career assistance. Some of these events included:

Fulton County Medicaid Reenrollment Event

This event, in collaboration with the Georgia Vocational Rehabilitation Agency, helped attendees with their application for the Georgia Pathways to Coverage Program. Peach State Health Plan, along with the other CMOs, was present to discuss benefits with potential GeorgiaA Pathways members and highlight the advantages of their health plans.

Women's Workforce Job Fair

In collaboration with Goodwill of North Georgia, Dress for Success, The Wealthy Group, and the Women's Council of REALTORS® MSAR, the Women's Workforce Job Fair offered professional development opportunities, on-the-spot interviews, and networking with leading employers. Participants also received free clothing, shoes, and coats. Representatives from Peach State Health Plan provided information about health programs, VABs, and Georgia Pathways.

Albany Tech, Goodwill, Albany Housing Authority & Peach State Health Plan Job Fair

The career and resource fair at Goodwill Southern Rivers in Albany, GA, featured over 30 vendors and attracted more than 400 attendees. PSHP, along with several community partners, provided job information and resources. The event also highlighted the GA

Addressing Root Causes

Pathways program, encouraging enrollment for those needing health insurance.

Peach State Health Plan & Clayton CSA Block Party

PSHP partnered with the Clayton County Community Services Authority (CSA) to host a block party, featuring PSHP Ambassador Champ Bailey and partners such as the Georgia Primary Care Association (GPCA), Ambetter Health, and Wellcare. The event offered health screenings, massages, free haircuts, and refreshing treats. Clayton County Community Services provided free diapers and energy assistance.

Black Maternal Health Week and Block Party

In April 2024, the Black Maternal Health Walk and Block Party, led by the Black Mamas Matter Alliance, Inc. (BMMA), the City of Atlanta Mayor's Office of Constituent Services (OCS), and 4Kira4Moms, took place at Selena S. Butler Park and the M.L. King Jr. Recreation and Aquatics Center.

As part of Black Maternal Health Week, which highlights the risks faced by Black birthing parents in the U.S., representatives from the Peach State Health Plan had the opportunity to advocate for our community's humanity and well-being. At the Mama's Village, we

also established partnerships with local vendors and engaged in meaningful discussions about the critical role of Community Health Workers.

Our Community Health team acts as liaisons between health and social services and the community, facilitating access to resources while improving the quality and cultural competence of service delivery. This event provided a valuable opportunity for us to give back to our community by supporting Black Maternal Health initiatives.

Pamper Me Pink: Peach State Health Plan Joins the Annual B. Allen Pink Sash Parade to Promote Breast Cancer Awareness

During Breast Cancer Awareness Month, Peach State Health Plan (PSHP) proudly partnered with the Annual B. Allen Pink Sash Parade, held at First St. Paul AME Church in Lithonia, Georgia, alongside State Representative Karen Bennett. This event brought together over 200 attendees, including members and non-members, who received valuable information about Value-Added Benefits and Georgia Pathways. Attendees were also provided with pink PSHP promotional items and educational resources to support and raise awareness for breast cancer.



Enhancing the Healthcare Experience

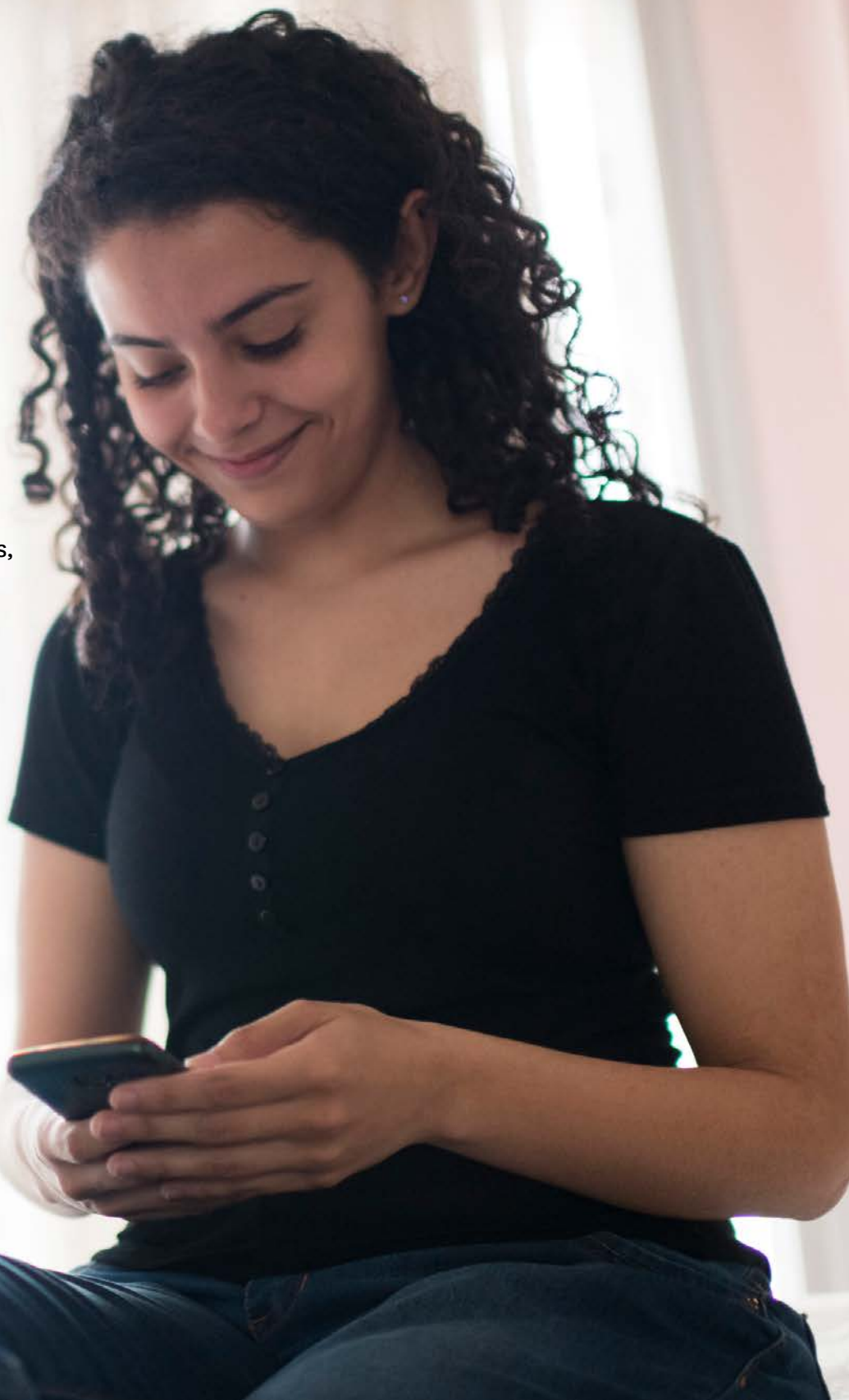


Empowering Health: Launching the PSHP by Sharecare App

Through our ongoing partnership with Sharecare, Peach State Health Plan (PSHP) launched the PSHP by Sharecare app to provide personalized health support to members. This innovative digital health tool offers access to wellness resources, empowering members to manage all aspects of their health in one convenient place.

By using the PSHP by Sharecare app, members can access tailored health support, including personalized insights, 'Near Me' navigation, SNAP integration, guided programs, and more.

To encourage members to take advantage of the app's benefits, Sharecare partnered with our Community Relations team, providing support at over 20 events across Georgia, which engaged more than 6,000 participants. These events included the Back-to-School Bash, the Summer Splash Block Party, Georgia Pathways Career Fair and more. Since the launch of the PSHP by Sharecare app, PSHP has had over 29,000 total activations and over 12,000 app downloads. As we continue this partnership into 2025, our members will benefit from specialized tools for their healthcare.



Enhancing the Healthcare Experience

Supporting Members' Mental Health and Suicide Prevention Efforts

Continuing our efforts to promote suicide prevention through engaging community outreach and digital campaigns, Peach State Health Plan partnered with **iBelieve in Me – DHP SHINE Program** and **Family Find Days – Partnership for Change** to provide mental health resources that nurture equity in underrepresented communities.

Additionally, we participate in **Choose Tomorrow**, a Centene suicide prevention program that focuses on utilizing evidence-based clinical practices and uses an innovative predictive risk modeling tool to identify and support members at potential risk of suicide. This program is founded on the Zero Suicide framework.

Peach State Health Plan remains committed to providing resources and improving accessibility in our efforts to decrease deaths by suicide. Two key resources available to members include the **Unwinding Anxiety by Sharecare** program and the **Livongo PSHP Mental Health Program**.

Unwinding Anxiety by Sharecare is an award-winning, evidence-based digital therapeutic program that combines neuroscience and mindfulness tools to help members:

- Identify anxious habits.



- Manage and ride out stressful episodes.
- Transform their relationship with stress.

Program Outcomes: 67% reduction in anxiety after two months and 27% reduction in worry-related sleep disturbances.

Emotional Health Support from myStrength offers members personalized emotional health support through:

- A tailored plan customized to individual preferences.
- Access to licensed therapists 7 days a week from the comfort of home.
- Recommended activities and content based on ongoing needs.
- 24/7 access via an online platform or mobile app.

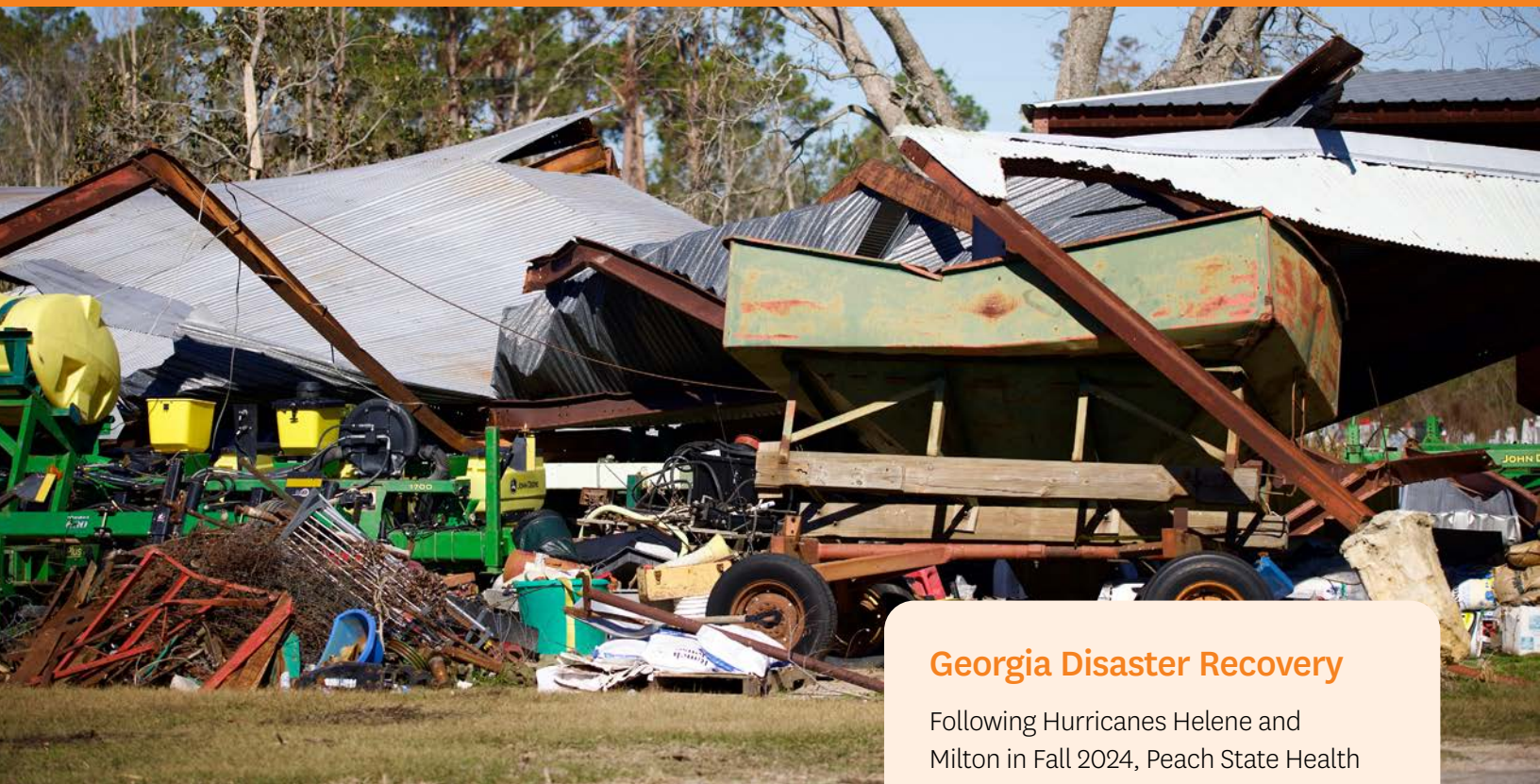
Prioritizing Behavioral Wellness with Grow Therapy

growtherapy

Peach State Health Plan partnered with Grow Therapy, a technology-enabled company helping make high-quality mental healthcare more effective and accessible. Grow Therapy offers talk therapy and medication management through licensed providers specializing in a wide range of mental health needs—including depression, anxiety, and more—for patients ages 6 and up.

Grow Therapy primarily delivers care through telehealth, with select in-person options that are easy to find and schedule. Members can view real-time provider availability and instantly book appointments, with most being seen within an average of just 3 to 4 days.

Connecting Rural Communities



Emergency Outreach Relief Program

Peach State Health Plan remains committed to supporting our members during natural disasters and public health emergencies, ensuring they have continued access to medical care. Through our Emergency Outreach Relief Program, we proactively monitor and follow up with those most vulnerable, providing critical assistance when it's needed.

Our Community Health Worker and Care Coordination teams conduct targeted outreach to members impacted by hurricanes, tornadoes, other severe weather, and school-related emergencies. This support is delivered through multiple channels, including text messages, emails, social media campaigns, phone calls, home visits, and in-person events within affected communities.

Specifically in 2024, PSHP donated over 1,000 disaster kits to members affected by hurricanes. These disaster kits included flashlights, toothpaste, toothbrushes, hand sanitizer, bottled water and baby essentials (i.e., diapers and baby wipes).

Georgia Disaster Recovery

Following Hurricanes Helene and Milton in Fall 2024, Peach State Health Plan and the Centene Foundation, the philanthropic arm of Centene Corporation, donated \$100,000 in support of Georgia's hurricane relief efforts and assisted the following organizations:

- United Way of Southwest Georgia (\$10,000)
- United Way of Toombs, Montgomery, and Wheeler Counties (\$10,000)
- Second Harvest of South Georgia (\$10,000)
- Georgia Primary Care Association - FQHC support (\$25,000)
- Southern Healthcare Collaboration, Inc. (\$5,000)
- National Council of Independent Living (\$25,000)
- Mt. Olive Food Pantry (\$5,000)
- The Lighthouse (\$5,000)

Connecting Rural Communities

Georgia School-Based Health Center Expansion (Georgia Primary Care Association)

Peach State Health Plan and the Georgia Primary Care Association (GPCA) identified significant healthcare access gaps in Georgia schools, exacerbated by the COVID-19 pandemic. To address this, Peach State Health Plan and the Centene Foundation donated \$1.1 million in 2023 to expand school-based health centers (SBHCs) through a three-year program. These grants, the first collaboration between Peach State, the Centene Foundation, and GPCA, support Federally Qualified Health Centers (FQHCs) in underserved areas, enhancing healthcare services for students.

Key achievements include:

- Initial funding of \$60K per site in 2023 to five FQHCs, supporting new and expanded SBHCs in both urban and rural communities.
- 43% increase in patient encounters from May 2023 to May 2024.
- Enhanced facilities and expanded services through new medical, dental, and telehealth equipment.

In 2024, \$300,000 in grants were awarded to five additional FQHCs for further improvements, focusing on equipment upgrades and staff expansion to support comprehensive care for Georgia's students:

- Georgia Mountains Health – Dahlonega (Lumpkin County)
- Primary Health Care Center of Dade – Ringgold (Catoosa County)
- First Choice Primary Care – Macon (Bibb County)
- Athens Model Neighborhood Health Center – Athens (Clarke County)
- Whitefoord Health Center/KIPP Woodson Park Academy – Atlanta (Fulton County)

Georgia Healthy Families Alliance (GHFA)

In 2023, Peach State Health Plan announced a \$150,000 grant to Georgia Academy of Family Physicians (GAFP) over a five-year period to support community and other critical events and services. Now in its second year, the GHFA continues to provide microgrants that range between \$1,000 and \$5,000 to GAFP member-identified special projects.

- These projects are aimed at reducing healthcare disparities for economically impaired individuals who are predominantly uninsured and/or underinsured.
- The projects are located across the state in both urban and rural communities of various races, ethnicities, genders, sexualities, and ages.



Peach State Health Plan and the Morehouse School of Medicine

Now in the fourth year of Peach State Health Plan's five-year commitment, the Peach State Excellence in Health Equity Innovation Fund and Initiative, established through a \$500,000 donation, continues to drive meaningful progress in advancing health equity. This effort has significantly supported Morehouse School of Medicine's Satcher Health Leadership Institute (SHLI) and the Center for Maternal Health Equity in their mission to address systemic health disparities. SHLI remains focused on tackling the political determinants of health, transforming healthcare systems, and promoting mental and behavioral health through leadership development, research, and policy advocacy – creating lasting change for communities across Georgia.

Connecting Rural Communities

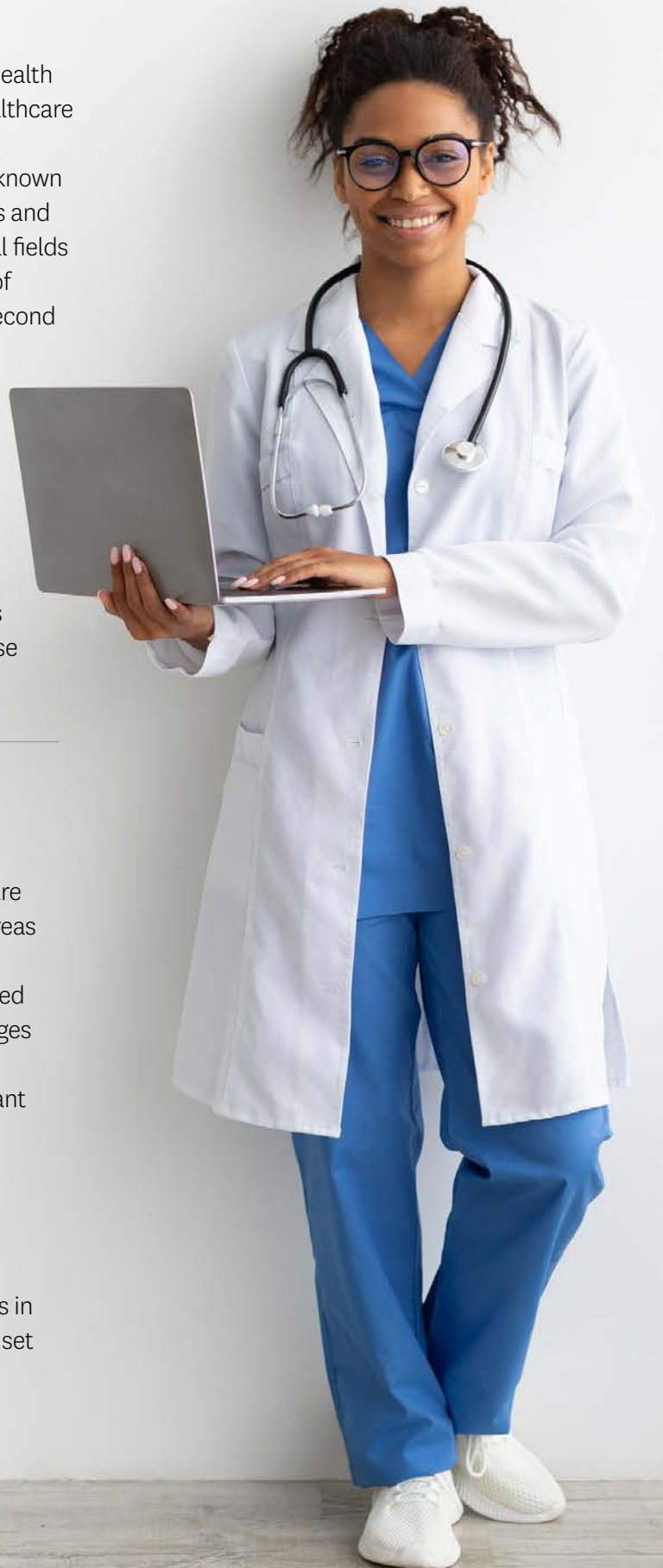
Augusta University/MCG3+ Program

In 2024, the Centene Foundation and Peach State Health Plan continued their commitment to expanding healthcare access in Georgia through the MCG3+ Primary Care Pathway program. This program enables students, known as "Peach State Scholars," to graduate in three years and enter residency in primary care or other key medical fields in exchange for serving rural or underserved areas of Georgia. Scholars also receive full tuition for their second and third years of medical school.

34 scholars are pursuing medical disciplines like internal medicine, emergency medicine, pediatrics, and OB/GYN, with the first cohort nearing the completion of residency. By 2025-2026, the program aims to train up to 300 MD students annually, improving healthcare access for rural communities. The anticipated impact includes over 352,800 patient visits within three years of these graduates entering practice.

Georgia Southern University

In 2024, the Centene Foundation and Peach State Health Plan continue their commitment to healthcare workforce development in rural and underserved areas of Georgia through their \$2.2 million investment in Georgia Southern University. This funding has enabled the launch of programs aimed at addressing shortages in nursing, behavioral health, and social work. Key milestones include hiring a Certified Nursing Assistant Program Director to develop curriculum, recruiting two coordinators to support student retention, and increasing nursing enrollment toward the goal of 500 BSN students by 2025. By 2026, 25 students are expected to graduate with a minor in Addiction Recovery/Social Work and begin clinical placements in rural counties. The second installment of funding is set to be disbursed in August 2025.



Spotlight on Collaborations



City of Refuge Transformation Center

Atlanta's Westside faces profound challenges, including systemic inequality, limited affordable housing, low household incomes, and educational disparities. In response, the Centene Foundation and Peach State Health Plan have invested \$1.5 million over four years to support the City of Refuge's Transformation Center, a 38,000-square-foot facility opening in late 2025. The center will address immediate needs such as food, shelter, and healthcare while providing education, job training, and financial literacy programs to foster long-term independence.

Key impact highlights through September 2024 include:

- 8,929 medical services provided, and 189,438 meals served.
- 135 women and children, and 43 men housed.
- 225 students enrolled in vocational training; 70 graduates placed in jobs earning a living wage.
- 26 individuals transitioned to stable housing, breaking cycles of poverty.
- 89 justice-involved individuals graduated from TYRO training with a 0% recidivism rate.
- This initiative is transforming lives by addressing housing, health, youth development, and economic mobility.



Champ Bailey, Pro Football Hall of Famer and PSHP Board Member, left, and members of the Peach State Health Plan team.

Spreading Holiday Cheer: Oak Hill Thanksgiving Giveaway Event

Peach State Health Plan, in partnership with Ambetter from Peach State Health Plan and Sharecare, proudly sponsored the Fulton County Oak Hill Child, Adolescent & Family Center Thanksgiving Giveaway Event. This heartwarming event brought the community together to celebrate the season of giving.

A total of 100 turkeys and food bags were distributed to members and community residents, ensuring families could enjoy a festive meal. Oak Hill Center Manager Alice Flen and her dedicated staff went above and beyond by providing coats for children in need.

Peach State Health Plan Ambassador Champ Bailey and his family joined the celebration, making the event even more memorable. Peach State Health Plan is honored to have contributed to this meaningful occasion, spreading holiday cheer and supporting the families we serve.

Community Engagement Day: A New Day for Health, Equity, and Justice

Morehouse School of Medicine has made significant contributions to addressing health disparities experienced by many individuals and families in the communities we serve. During Community Engagement Day, a collaborative event with our long-term community partner, over 300 members and non-members attended. As part of this initiative, some men were offered Prostate-Specific Antigen tests. Through this meaningful collaboration, Peach State Health Plan continues to advance health equity and support the achievement of health justice.

Making a Difference: Volunteerism Beyond the Workplace

Peach State Health Plan Volunteer Ambassadors actively participated in 30 service opportunities across the state of Georgia. Contributing a total of 254 employee service hours, these efforts exemplified our team's unwavering commitment to making a positive impact in the communities we serve. Here are a couple impactful moments:



Leading the Way: Helping Mamas Team Challenge

Peach State Health Plan secured first place in monetary donations for the third consecutive year in the Helping Mamas Team Challenge. Together, we raised an impressive \$5,795 to support mothers and families in need.

A heartfelt thank you to everyone who contributed – your generosity continues to make a meaningful difference in the lives of so many. This achievement reflects our unwavering commitment to supporting our community and fostering positive change.

Giving Back: Peach State Health Plan Volunteers at the Salvation Army

During the holiday season, Peach State Health Plan employees had the privilege of volunteering at the Salvation Army in Marietta, Georgia. This incredible facility featured a community food pantry, and a gym filled with over 700 holiday bags prepared for distribution.

Holiday bags were filled and delivered to approximately 700 families in Cobb County, reaching nearly 1,800 children during the holiday season. Peach State Health Plan was proud to support efforts that brought joy and essential resources to local families in need.

Thank you!

Peach State Health Plan proudly collaborates with a diverse network of healthcare providers across Georgia, ensuring access to high-quality healthcare delivered with compassion and respect. These dedicated providers play a vital role in transforming community health, making a meaningful impact through their unwavering support.

In addition to healthcare partnerships, PSHP works with organizations statewide to give back to the communities we serve. Together, we strive to create a healthier, stronger Georgia, partnering with:

ADOPTIVE AND FOSTER PARENT ASSOCIATION OF GEORGIA

AMERICAN DIABETES ASSOCIATION

AUGUSTA UNIVERSITY/MEDICAL COLLEGE OF GEORGIA FOUNDATION

CITY OF REFUGE

GEORGIA ASSOCIATION OF COMMUNITY CARE PROVIDERS

GEORGIA ACADEMY OF FAMILY PHYSICIANS

GEORGIA ASSOCIATION FOR PRIMARY HEALTH

GEORGIA ASSOCIATION OF MEDICAL EQUIPMENT

GEORGIA CHAPTER AMERICAN ACADEMY OF PEDIATRICS

GEORGIA HEALTHY FAMILY ALLIANCE

GEORGIA HOSPITAL ASSOCIATION

GEORGIA PERINATAL ASSOCIATION

GEORGIA PSYCHIATRIC PHYSICIANS ASSOCIATION

GEORGIA SOUTHERN UNIVERSITY FOUNDATION

GEORGIA STATE MEDICAL ASSOCIATION, INC.

GEORGIA PRIMARY CARE ASSOCIATION

UNITED WAY OF SOUTHWEST GEORGIA

UNITED WAY OF TOOMBS, MONTGOMERY AND WHEELER COUNTIES

SECOND HARVEST OF SOUTHWEST GEORGIA

NATIONAL COUNCIL OF INDEPENDENT LIVING

SOUTHERN HEALTHCARE COLLABORATION, INC.

MT. OLIVE FOOD PANTRY

THE LIGHTHOUSE

HABITAT FOR HUMANITY OF NORTHWEST METRO ATLANTA

HEALTHY MOTHERS, HEALTHY BABIES COALITION OF GEORGIA

HELPING MAMAS, INC.

HOMETOWN HEALTH

KIDS'-DOC-ON-WHEELS, INC.

LATINO MEDICAL STUDENT ASSOCIATION

MEDICAL ASSOCIATION OF GEORGIA, INC

METRO ATLANTA CHAMBER

MOREHOUSE SCHOOL OF MEDICINE

NAMI GEORGIA

SOCIAL EMPOWERMENT GRANT

ST. JOSEPH'S/CANDLER FOUNDATIONS

THE COMMUNITY FOUNDATION FOR GREATER ATLANTA

THE CONFESS PROJECT OF AMERICA

THE GEORGIA OBSTETRICAL AND GYNECOLOGICAL SOCIETY

TOGETHER GEORGIA PROVIDER ALLIANCE INC

URBAN LEAGUE OF GREATER ATLANTA

VOICES FOR GEORGIA'S CHILDREN


YOUNG MEN'S CHRISTIAN ASSOCIATION OF USA (YMCA)




pshp.com

1-800-704-1484

TDD/TYY 1-800-255-0056

 facebook.com/PeachStateHealthPlan

 x.com/pshp

 peachstatehp

 @PeachStateHealthPlan

 Peach State Health Plan

1100 Circle 75 Parkway
Suite 1100
Atlanta, GA 30339

